



ALUVETRO

LO SGUARDO OLTRE

POCKET CATALOGUE

Glass balustrades
for contemporary architecture.



MODULAR SYSTEM



NEW
PRODUCT
2021

MODULAR SP

GROUND
FASTENING

NEW
PRODUCT
2021

MODULAR FS

FRONTAL SLAB
FASTENING

GARDA SYSTEM



NEW
PRODUCT
2021

GARDA ONE

GROUND
FASTENING

GARDA SP

GROUND
FASTENING





GARDA AP

ANCHORING
FLUSH WITH THE GROUND



GARDA FS

FRONTAL SLAB
FASTENING



GARDA MINI

ABOVE-WALL
FASTENING



POINT

FRONTAL SLAB
FASTENING BY STUDS



LAMINA

CANOPY



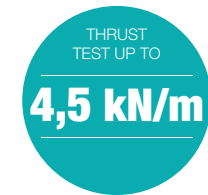
MODULAR



A latest-generation parapet with a modern design, ideal for each and every type of renovation work on condo façades as well as for new constructions.

Numerous technical and aesthetic advantages characterise the Modular balustrades, but customisation is the true distinctive feature of the system. The design, the geometry of the uprights with infill panels your choice between glass, vertical rod, sheet metal or other materials, the colour and type of fastening all guarantee an architectural result of the highest level.

Modular is designed for quick and easy on-site installation, thanks to many technical advantages for installers. Each module can reach the site pre-assembled and ready for installation to facilitate construction times.



Technical advantages

- Quick and easy installation
- Comes pre-assembled and ready for installation on-site
- Adjustable module for uneven situations
- Adjustable and standard versions for each type
- System tested by certified laboratories
- The surface prevents children from being able to climb on it
- The system facilitates water runoff
- Maintenance is limited to cleaning only

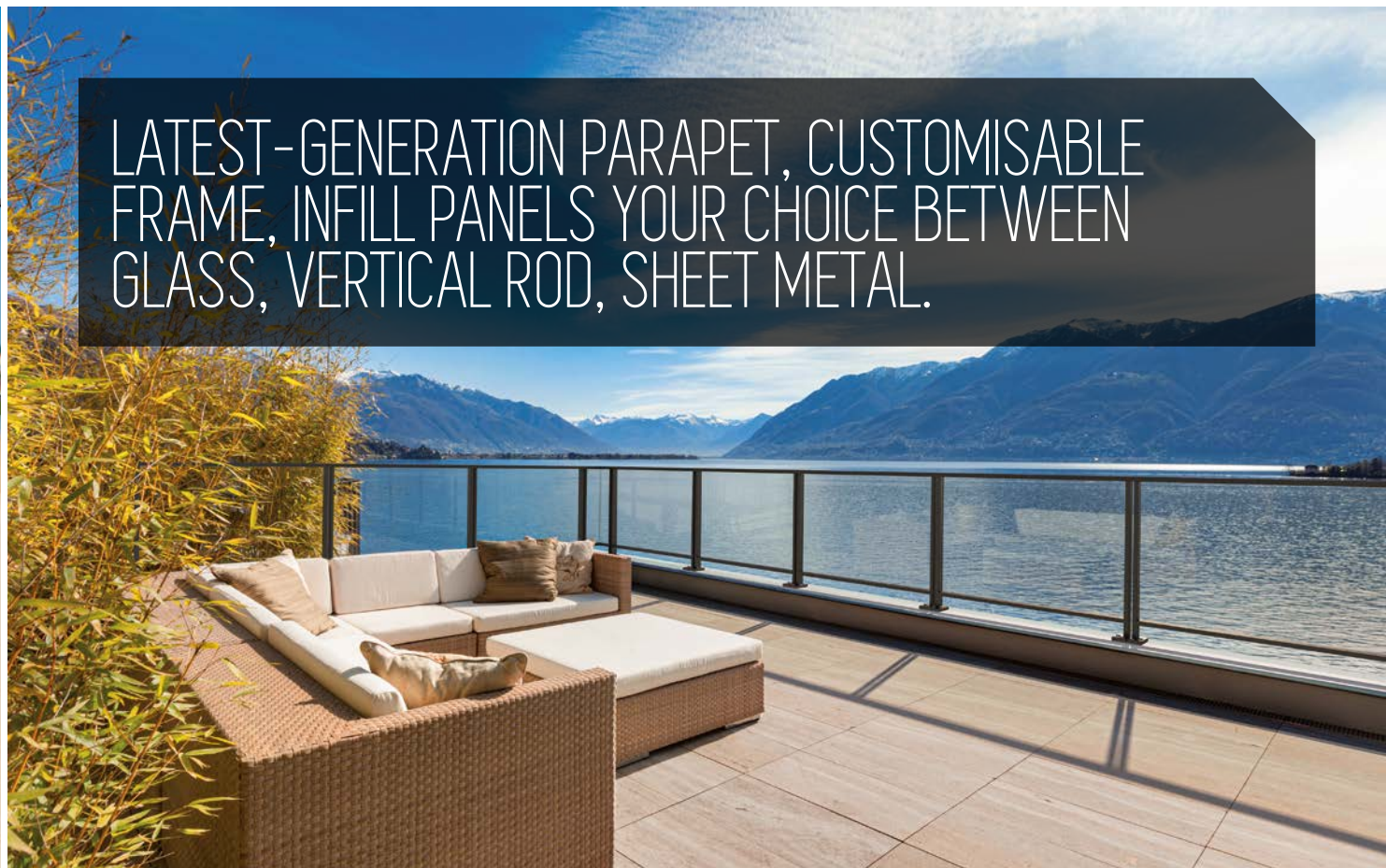
Aesthetic benefits

- Modern and minimalist look
- Customisation of the frame's texture and RAL colours
- Customisable infill panels, with a choice of glass, sheet metal and vertical rods
- Clear-cut and essential design
- Ideal for modernising façades in renovation operations
- A decorative feature for new projects
- Customisation of the glass colours
- Corner with "glass-glass" continuity without uprights





LATEST-GENERATION PARAPET, CUSTOMISABLE
FRAME, INFILL PANELS YOUR CHOICE BETWEEN
GLASS, VERTICAL ROD, SHEET METAL.



Customisations

Each system utilises aluminium components with highly protective finishes, bearing a powder coating in respect of **Qualicoat** processes to ensure the utmost resistance to external atmospheric agents.



THE TRUTS AND GLASS PANELS CAN BE CUSTOMISED WITH RAL COLOURS ON REQUEST

QUALICOAT

QUALICOAT IS THE QUALITY BRAND FOR PAINTED ALUMINIUM (WITH LIQUID OR POWDER PRODUCTS) USED IN ARCHITECTURE

ANTRACITE RAL 7016



WHITE RAL 9003



BLUE RAL 5014



GREY RAL 7012



Glass

The Modular system uses laminated glass tested to withstand dynamic impact, ensuring maximum safety.

The finished product is obtained with a choice between numerous chromatic combinations and different surface finishes: Float, Extra-clear, Smoky, Bronze and a range of different colours, screen-printed with full or partial coverage or shading to guarantee privacy.

CLEANING

The glass areas can be protected by means of **Cleaner** treatment, which considerably reduces time of cleaning and maintenance, limiting the accumulation of limescale and dirt.



FLOAT



EXTRA-CLEAR



MILKY-WHITE



REFLECTIVE



BRONZE



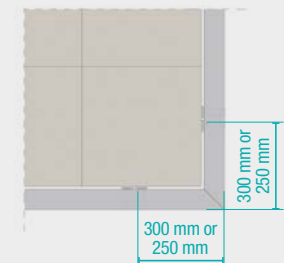
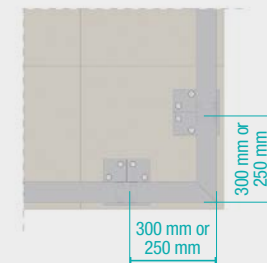
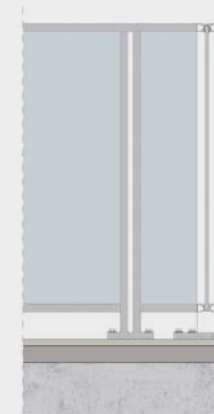
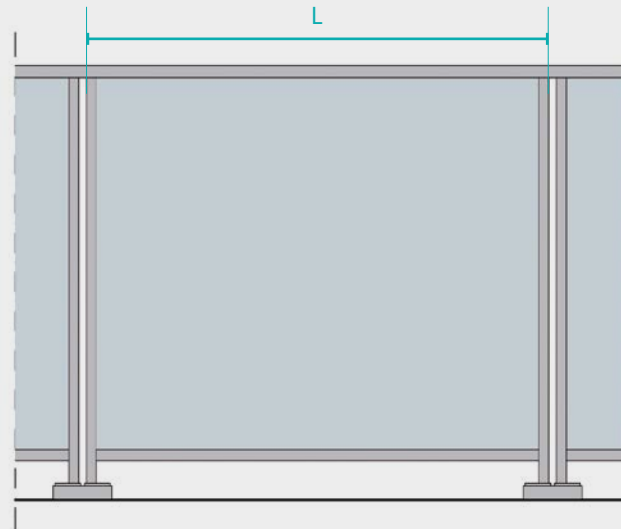
SMOKY



OTHER COLOURS ON REQUEST

Steps of modules and corners

- 600 mm
- 900 mm
- 1000 mm
- 1100 mm
- 1200 mm
- 1300 mm
- 1380 mm
- 1680 mm



The Modular range of balustrades

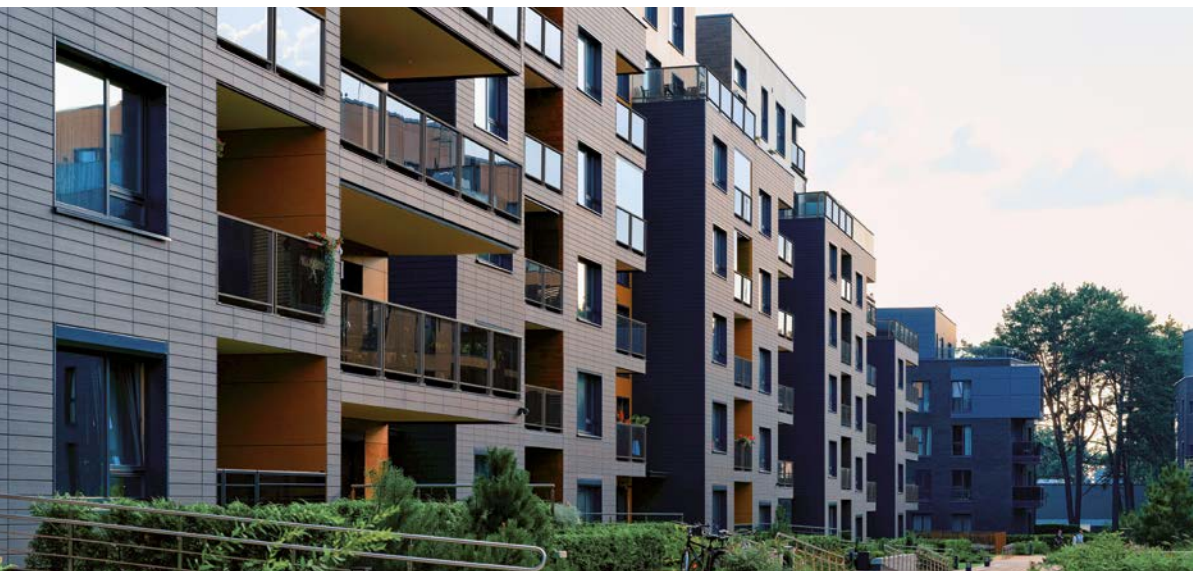
Two versions are available - the **Modular SP** installed atop the paving and the **Modular FS** that is fastened to the front of the floor. In accordance with the type of anchorage, in the Standard or Adjustable version, the load resistances are 200 kg/m or 300 kg/m depending on the distance between the uprights.

SAFETY

Modular balustrades are tested by laboratories accredited by the Ministry of Public Works and have passed tests for dynamic and static loads up to 4.5 kN/m (with a thrust of up to 300 kg/m).

MODULAR SP STANDARD

GROUND FASTENING

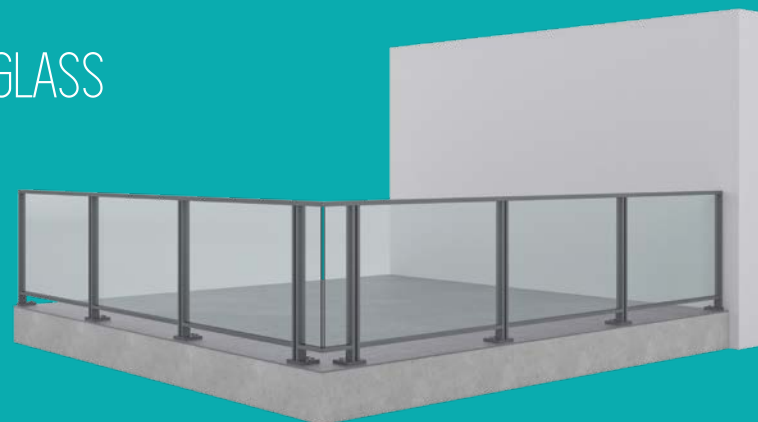


Infill Panels

The design of the element offers the possibility to choose between three different infill panel solutions: glass, sheet metal, vertical rods or other materials, to guarantee a highly customisable result.

Another architecturally significant aspect is the corner option with “glass-glass” continuity, meaning without any central struts on the corners.

GLASS

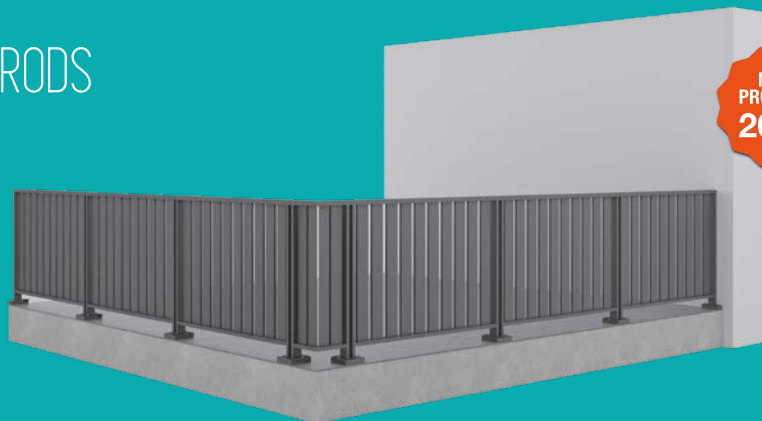


MODULAR FS STANDARD

FRONTAL SLAB FASTENING



RODS



NEW
PRODUCT
2022

SHEET METAL



NEW
PRODUCT
2022

GARDA



Thanks to the use of glass, these balustrades guarantee maximum clear-cut design in new constructions, renovations and restorations for building projects. They are available with or without handrails, in accordance with a customisable system in over twenty different architectural and chromatic combinations.

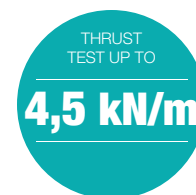
Garda system, tested by certified laboratories, is composed of various elements (profile, fastening system, casing, laminated and tempered glass) – all designed to ensure ease and speed in assembly and an aesthetic result that is ideal for the world of contemporary architecture.

Technical advantages

- System tested in certified laboratories
- The surface prevents children from being able to climb on it
- Quick and easy assembly
- Excellent noise reduction
- The profile facilitates water runoff
- Maintenance limited to cleaning only

Aesthetic benefits

- Maximum transparency for exceptional views
- Excellent luminosity for the premises
- Customisation in the finishes and colours of the casings and glass
- Option to install LED light strips



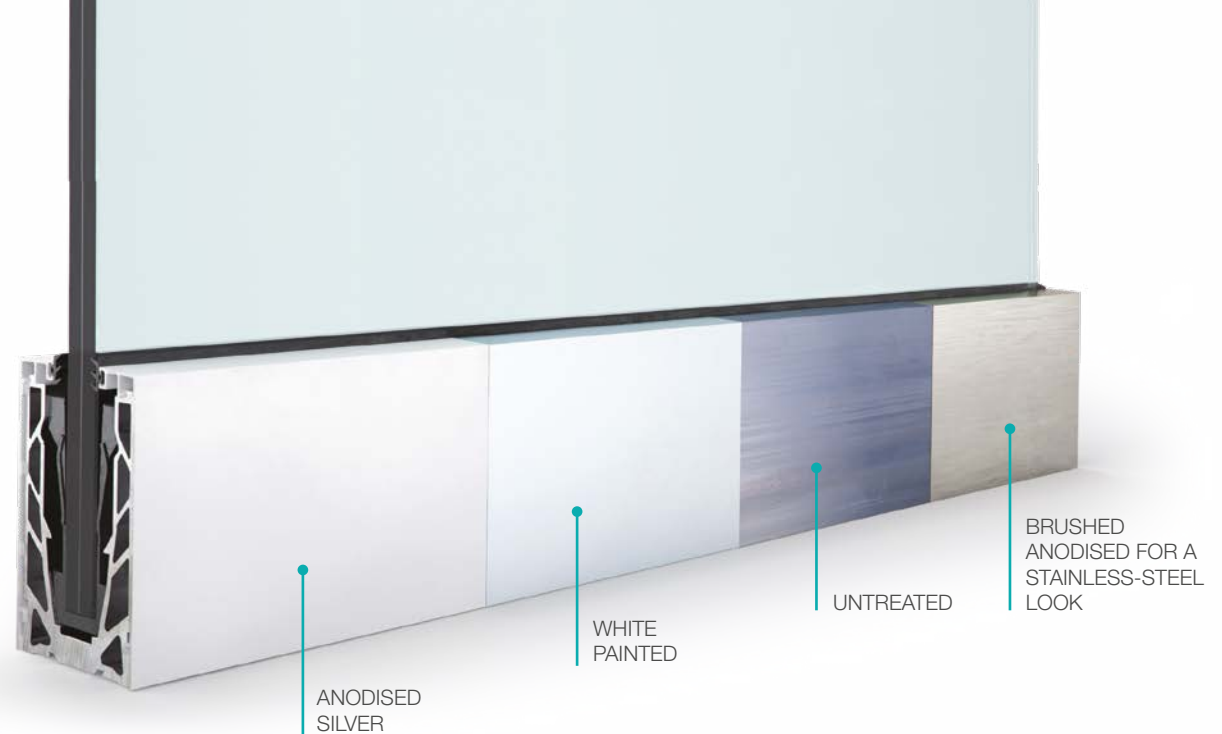


A TRANSPARENT, CLEAN AND MINIMALIST DESIGN,
TO DEFINE ANY ARCHITECTURAL CONTEXT, BE IT
INTERNAL OR EXTERNAL.



Customisations

The **casings** undergo an anodising process for a finish with aesthetic and, above all, protective characteristics that are able to withstand exposure to aggressive urban or marine atmospheres. Our profiles have an anodisation of 20 microns.



THE CASINGS

The **casings** are available in 8 different finishes, with customisations in terms of anodic features in the available colours or painting according to RAL tables.

Standard and **design finishes** are the result of research and development in respect of contemporary architectural requirements.

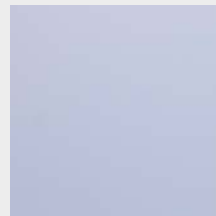
STANDARD FINISHES

- silver anodised
- brushed anodised
- painted white
- untreated

DESIGN FINISHES

- polished chrome
- shiny champagne gold
- antiqued
- burnished grey
- dark brown

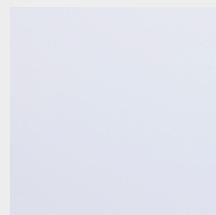
STANDARD FINISHES



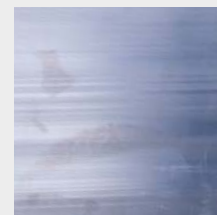
ANODISED SILVER



BRUSHED ANODISED FOR A STAINLESS-STEEL LOOK



WHITE PAINTED



UNTREATED

DESIGN FINISHES



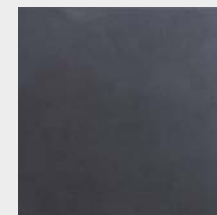
POLISHED CHROME



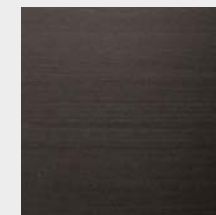
BRILLIANT CHAMPAGNE GOLD



ANTIQUED



BURNISHED GREY



DARK BROWN

Glass

To ensure maximum safety, the Garda system can mount **six different thicknesses of laminated and tempered glass, all tested to withstand dynamic impact:**

- 8/8.4 total thickness mm 17,52
- 10/10.4 total thickness mm 21,52
- 12/12.4 total thickness mm 25,52
- 8/8.2 total thickness mm 16,76
- 10/10.2 total thickness mm 20,76
- 12/12.2 total thickness mm 24,76

The finished product is obtained with a choice between numerous chromatic combinations and different surface finishes: Float, Extra-clear, Smoky, Bronze and a range of different colours, screen-printed with full or partial coverage or tinting to guarantee privacy. Each solution can be combined with the use of LEDs to create a particularly delightful illumination effect.



EXTRA-CLEAR



SMOKY



FLOAT



REFLECTIVE



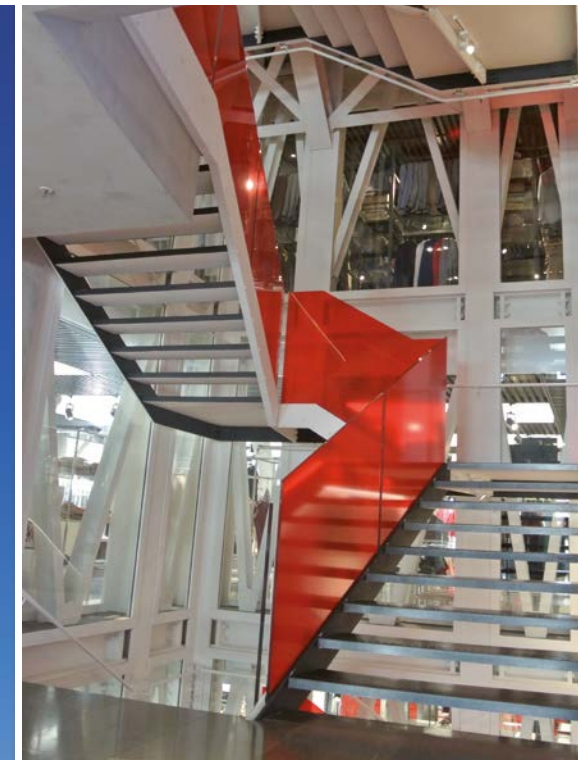
MILKY-WHITE



BRONZE



COLOUR UPON REQUEST



The Garda range of balustrades

Garda is a truly complete construction system, with variants to the structures developed according to the type of anchoring, to adapt to each project and construction solution.

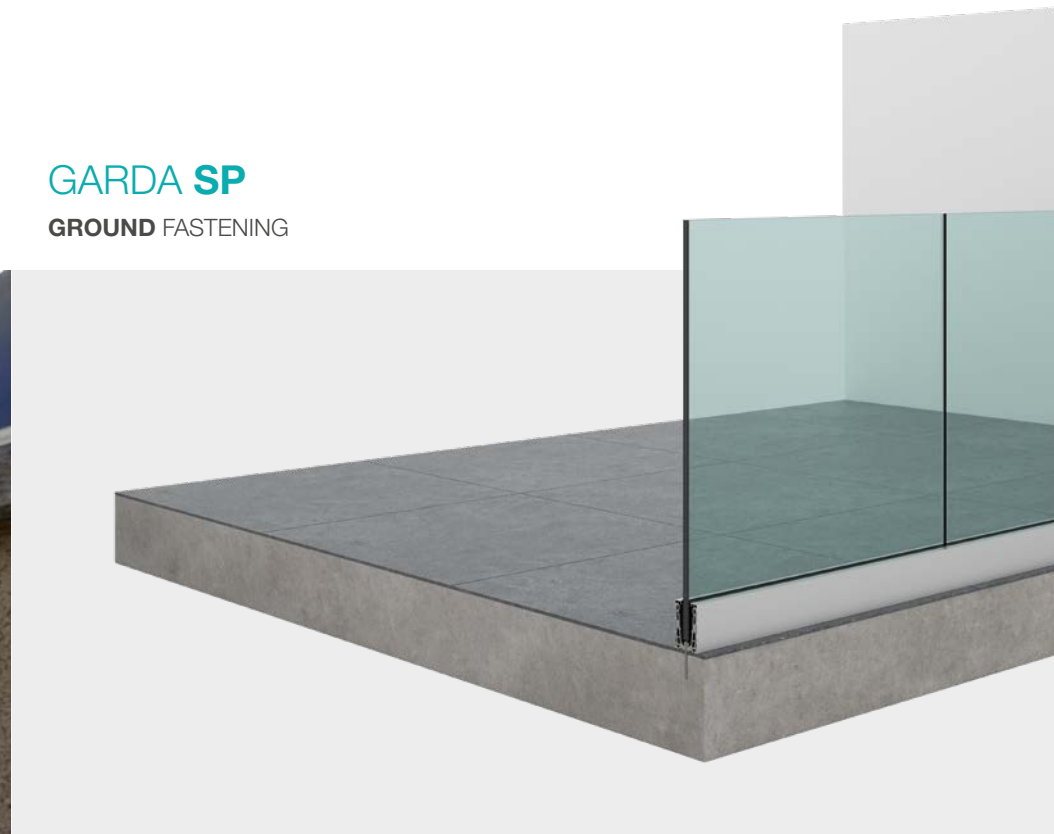
SAFETY

Garda balustrades are tested in laboratories accredited by the Ministry of Public Works and have passed tests for dynamic and static loads up to 4.5 kN/m (with a thrust of up to 300 kg/m).



GARDA SP

GROUND FASTENING



GARDA ONE

GROUND FASTENING



GARDA FS

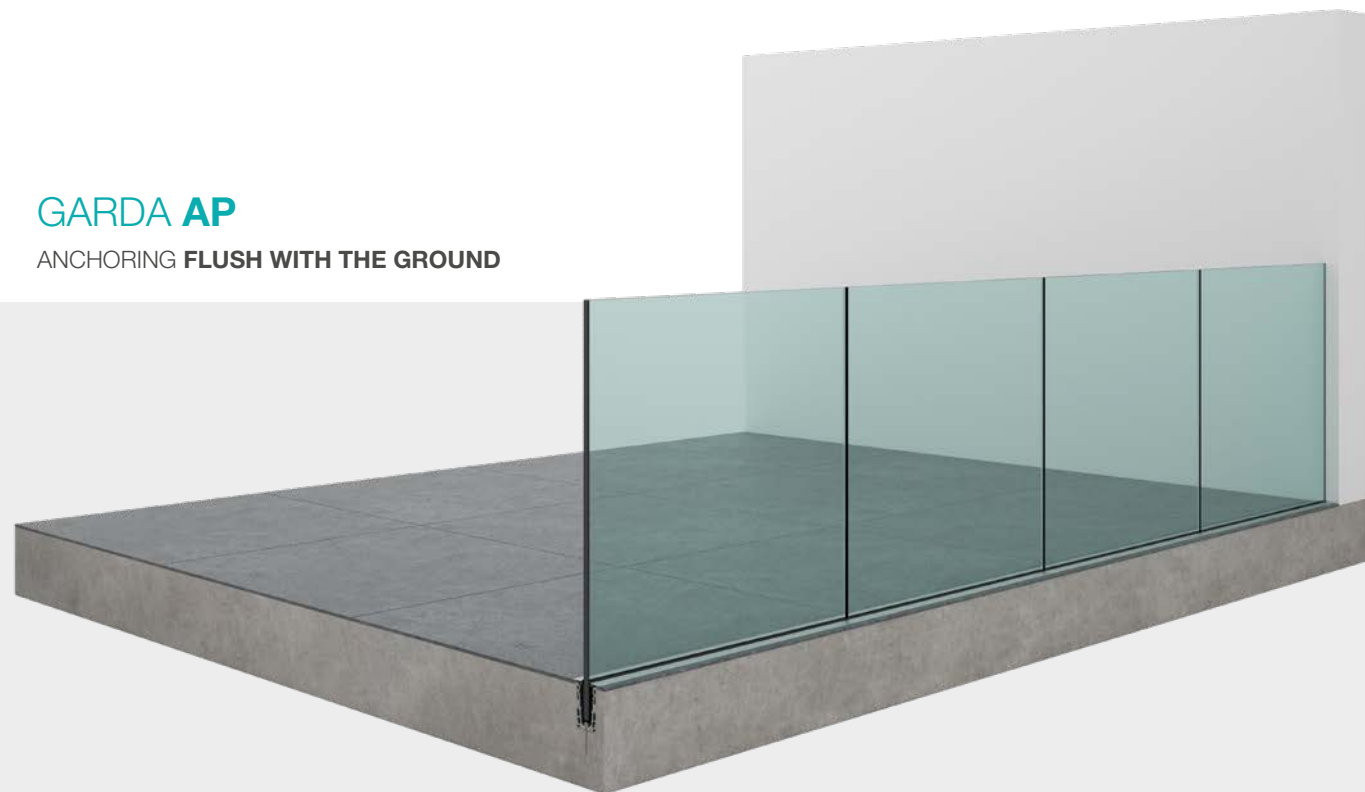
FRONTAL SLAB FASTENING





GARDA **AP**

ANCHORING **FLUSH WITH THE GROUND**



GARDA **MINI**

ABOVE-WALL FASTENING



POINT

FRONTAL SLAB FASTENING
WITH **NODES**





aluvetro.it

ALUVETRO srl Unipersonale

Via Lombardia, 4/6 - Orzinuovi (BS) - ITALY

Tel. +39 030 9444433 | Fax +39 030 9946653

info@aluvetro.it | www.aluvetro.it

