



ALUVETRO

LO SGUARDO OLTRE

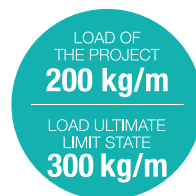


GARDA ONE

Glass balustrades
for contemporary architecture.



balustrade GARDA ONE

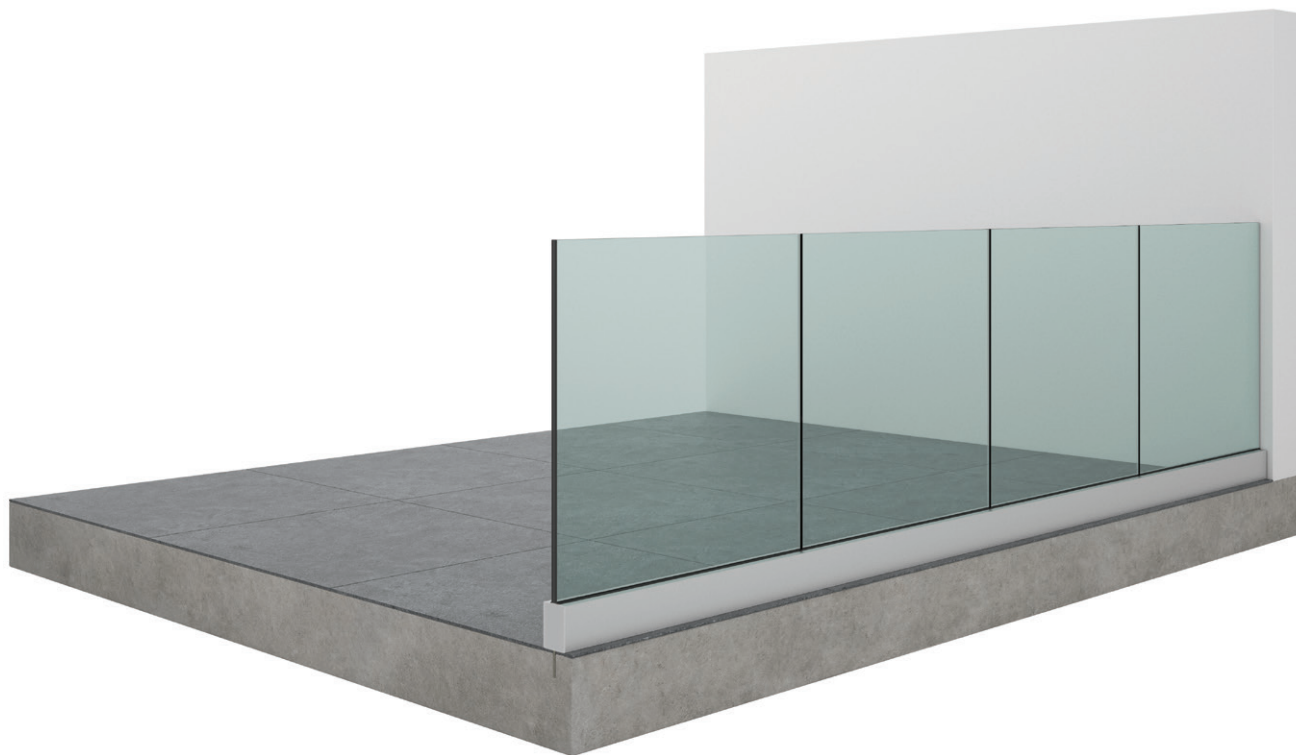


Thanks to glass, these balustrades add maximum formal cleanliness to projects of new construction, renovation and building restoration: they are available with or without handrails, according to a system that can be customized in over twenty different architectural and chromatic combinations.

The Garda One system, tested in certified laboratories, is composed by different elements (profile, fixing system, laminated and tempered glass) designed to ensure easiness and speed of assembly, as well as to give an aesthetic result ideal for the world of contemporary architecture.

Main features are adjustment and fixing to be carried out only from the internal side.

The profile has a definitive surface finish, does not require a casing and is supplied with a protective anti-scratch film.



GLASS



FLOAT



LOW IRON



WHITE MILK



BRONZE



SMOKE



COLOUR
ON REQUEST

TECHNICAL ADVANTAGES

- System tested in certified laboratories
- Quick adjustment of the glass on the vertical axis
- The surface prevents children from climbing
- Quick and easy assembly
- Excellent noise reduction
- The profile allows the water to drain
- Maintenance limited to cleaning only

AESTHETIC ADVANTAGES

- Maximum transparency for an excellent view
- Excellent brightness of the premises
- Customization of the profile and glass with finishes and colors
- Possibility of inserting LED strips

FINISHES

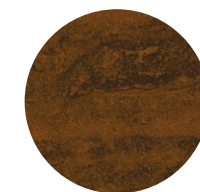
Profiles are protected by anti-scratch protective film



SILVER
ANODIZED
20 micron



RAL COLOUR
ON REQUEST



MATERIAL EFFECTS
ON REQUEST

GARDA ONE

FIXING **ON THE FLOOR**



Adjustment
of the glass
inclination ± 15 mm

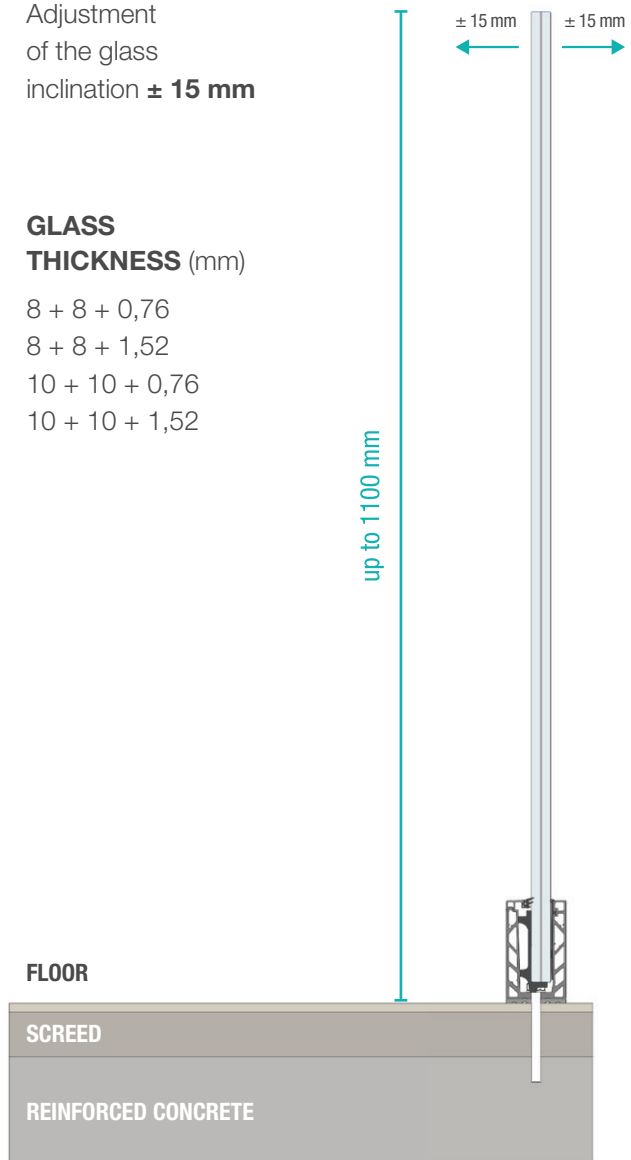
GLASS THICKNESS (mm)

8 + 8 + 0,76

8 + 8 + 1,52

10 + 10 + 0,76

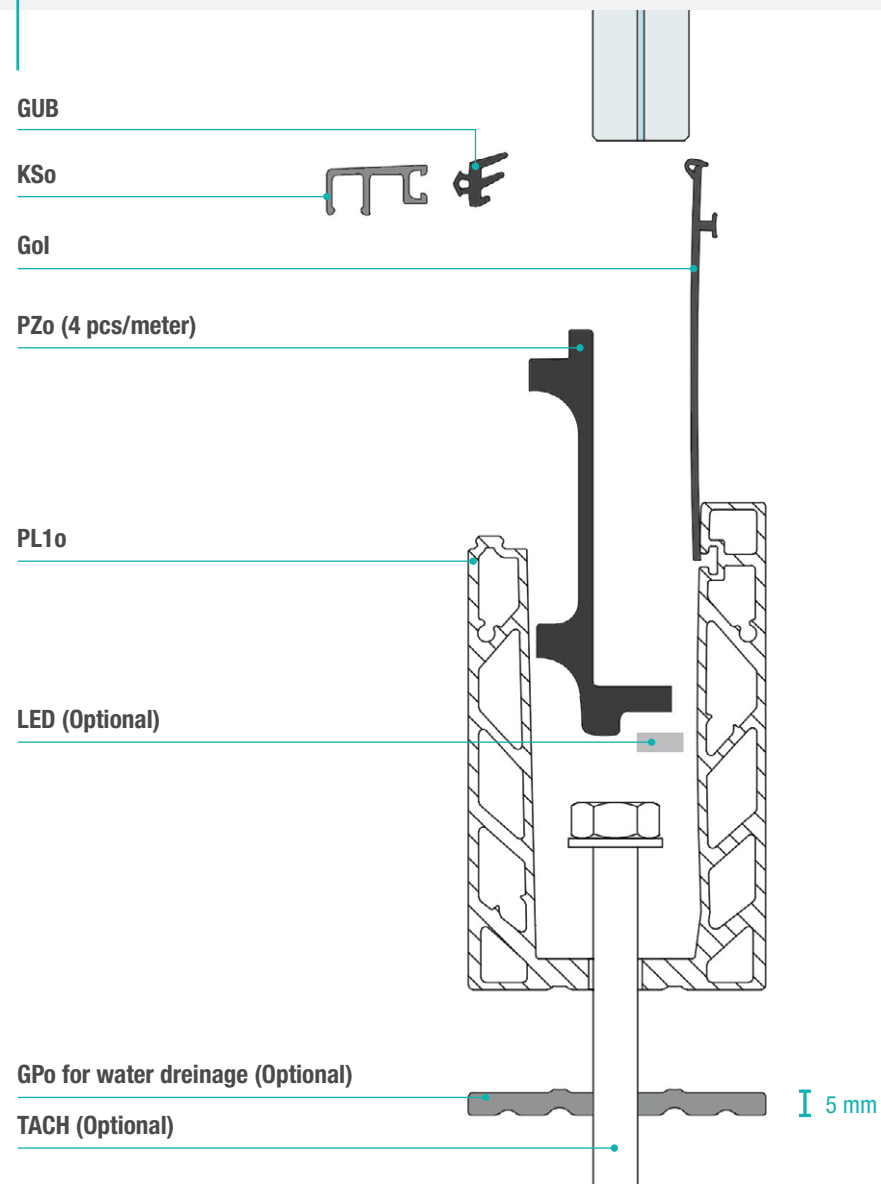
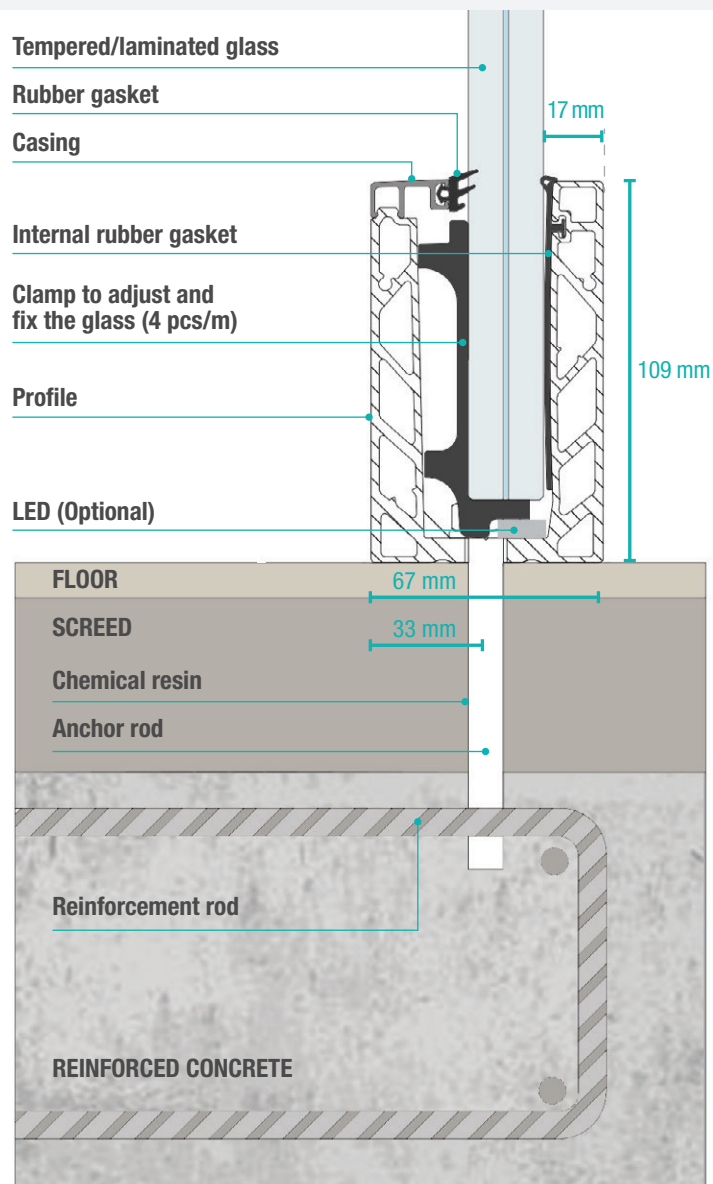
10 + 10 + 1,52



LOAD OF
THE PROJECT
200 kg/m

LOAD ULTIMATE
LIMIT STATE
300 kg/m

ARTICLE CODES



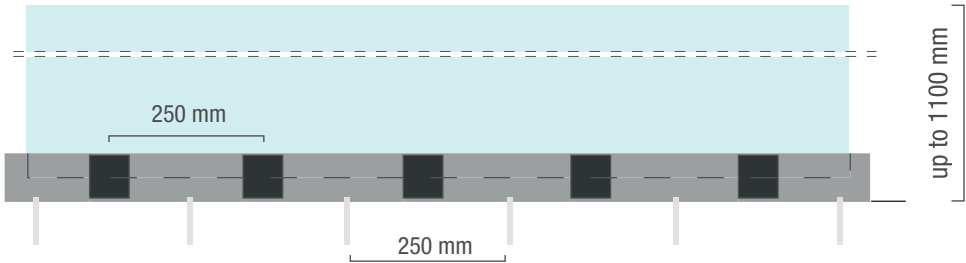
GARDA ONE HAS PASSED THE FOLLOWING TESTS AT LABORATORIES CERTIFICATED ACCORDING TO THE REGULATIONS IN FORCE

SLE* kN/m	SLU kN/m	H balustrade from walking surface mm	Glass type
2	3	1000	8/8 T+H PVB
2	3	1000	8/8 T+H EVA
2	3	1100	10/10 T+H PVB

*indicated values NTC 2018

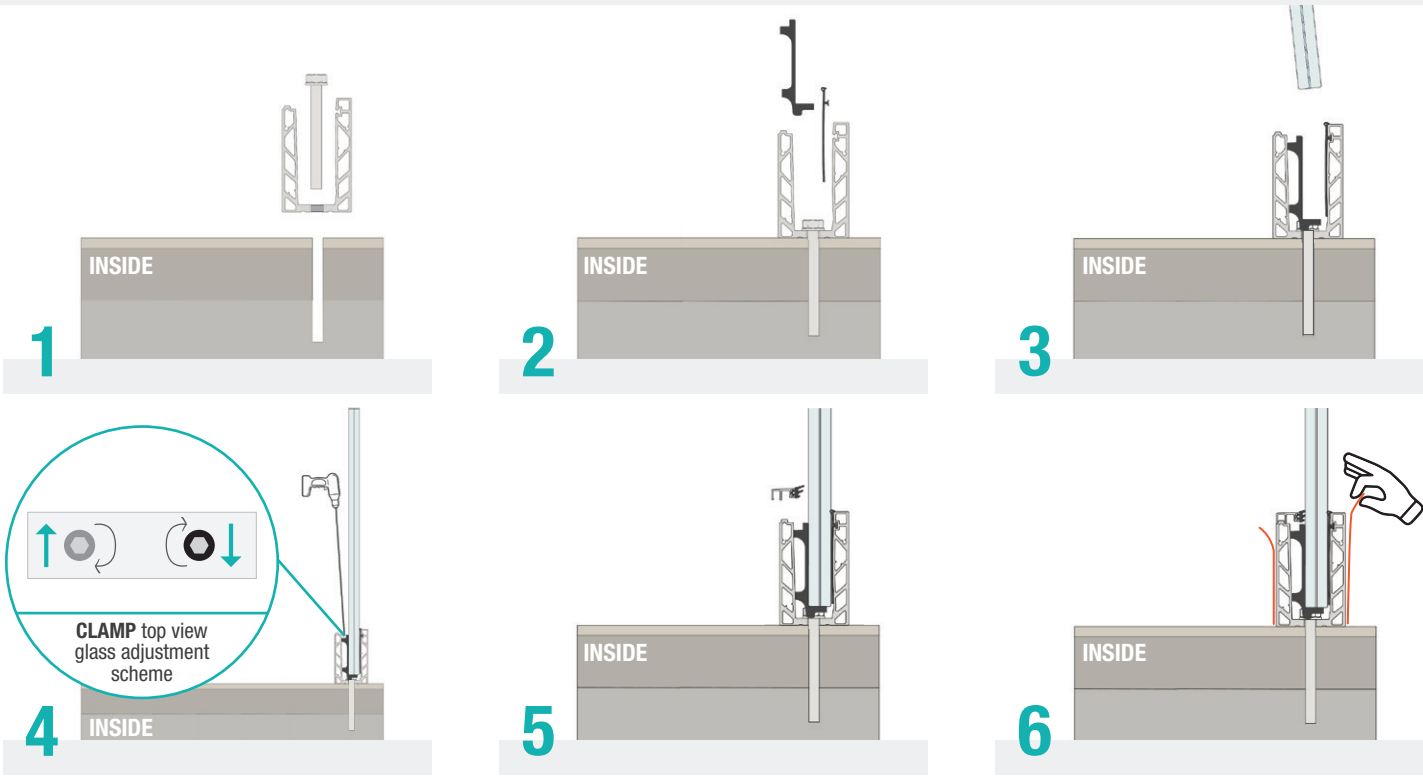
GLOSSARY
SLE: Load Ultimate Limit State
SLU: Ultimate Limit State
T: Tempered
H: Hardened

INSTALLATION PATTERN



Installation steps

- 1 Drill the slab with a drill; place the profile and the fixing screws.
- 2 Place the internal gasket and insert the clamps each 250 mm. Do not place the clamps in correspondence with the fixing screws.
- 3 Insert the glass by tilting it inwards.
- 4 Adjust the glass inclination by means of the clamps on the fixing screws: gray screw for movement outwards, black screw for inward movement. Tighten.
- 5 Fit the internal casing to which it was previously inserted the gasket.
- 6 Remove the protective film. Installation finished.



GARDA ONE

Compact profile

Certified laboratory test reports

Glass adjustment inwards and outwards (± 15 mm)

Adjustment and fixing accessories on the internal side only

Possibility of inserting LEDs

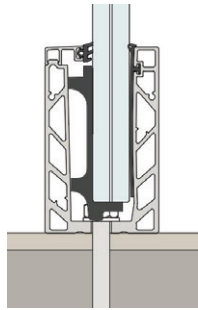
Profile with surface finish and scratch-resistant film

Profile to be cut in degrees in the corners

Glass Height from floor up to 1100 mm

Resistance: design load equal to 2 kN / m

Accessory for water drain GP



GARDA SP 200

Analytical verification by a qualified technician

Certified laboratory test reports

Glass adjustment inwards and outwards (± 25 mm)

Adjustment and fixing accessories on both sides

Possibility of inserting LEDs

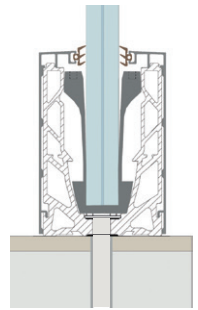
Finishing casing to be installed at the end of the installation

In the corners it is possible to cut in degrees only the casings

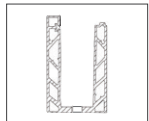
Glass height from the floor up to 1200 mm

Resistance: design load equal to 2 kN / m

Accessory for water drain GP



System elements



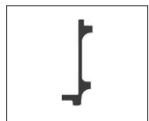
Drilled base profile		
Code	Lenght	Colour
PL1o NAT	3-6 m	natural
PL1o ARG	3-6 m	silver (filmed)



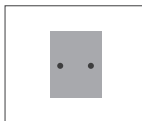
Rubber gasket between carter and glass		
Code	Glass thickness	Colour
GUB 4	8/8.4	black
GUB 2	10/10.4	black



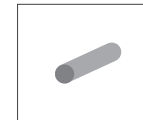
Anchor rod		
Code	Lenght	Note
TACH 14	140 mm	M10 galvanized steel 8.8



ONE clamp	
Code	Glass thickness
PZo 8	8/8.4
PZo 10	10/10.4



End cap	
Code	Colour
T1o NAT R/L	natural
T1o ARG R/L	silver



Alignment pin		
Code	Lenght	Note
ALo	50 mm	graft between profiles



ONE internal rubber	
Code	Note
GoI	black internal rubber gasket



Accessory for water drain		
Code	Lenght	Colour
GPo	100 mm	natural



Screwdriver extension	
Code	Note
PR55	screwdriver extension (1 bit included)
PR INS	replacement bit for screwdriver extension



Superior carter		
Code	Lenght	Colour
KSo NAT	3-6 m	natural
KSo ARG	3-6 m	silver



Neoprene cube between glass panels	
Code	Note
CB	it fills a space of 5-30 mm between glass panels



aluvetro.it

ALUVETRO SRL Unipersonale

Via Lombardia, 4/6 - Orzinuovi (BS) - ITALY

Tel. +39 030 9444433 | Fax +39 030 9946653

info@aluvetro.it | www.aluvetro.it

